

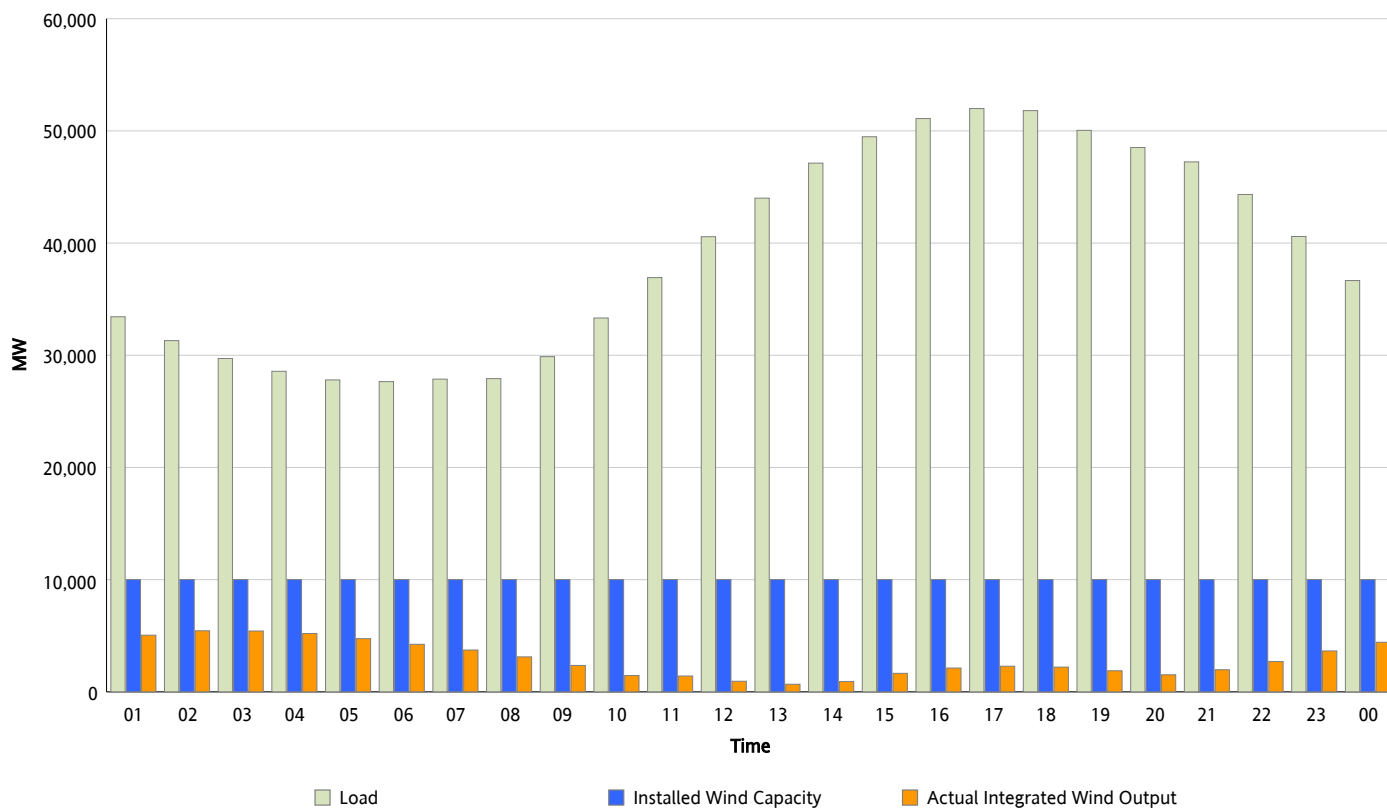


ERCOT Grid Operations

Wind Integration Report : 09/23/2012

Peak Load	51,993 MW
Load Peak Hour (HE)	17
Wind Over Peak	2,286 MW
Wind Record 06/19/12	8,368 MW
Max Wind Value*	5,622 MW
Wind Peak Time	01:59
Wind Integration %	18.54 %

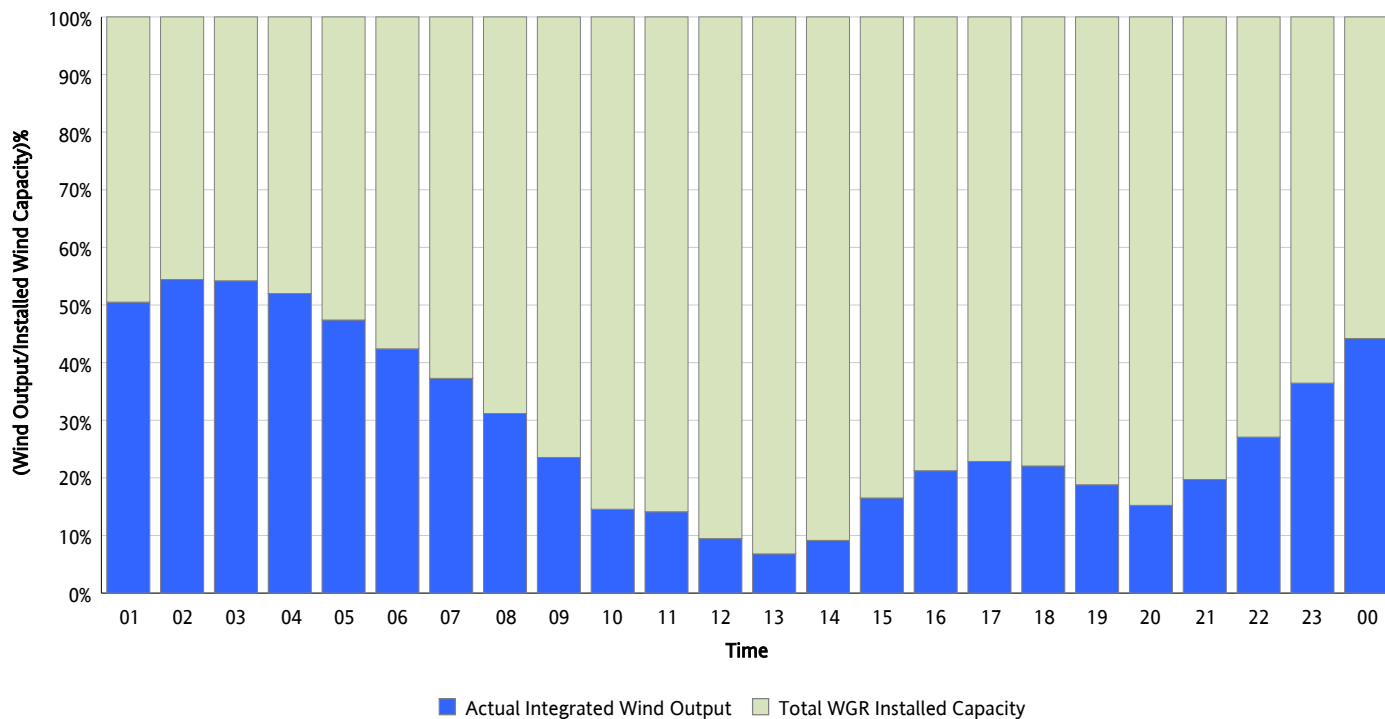
Hourly Average Actual Load vs. Actual Wind Output
09/23/2012



** Wind Record and Wind Max represent instantaneous values and the rest of the values are integrated over the hour*

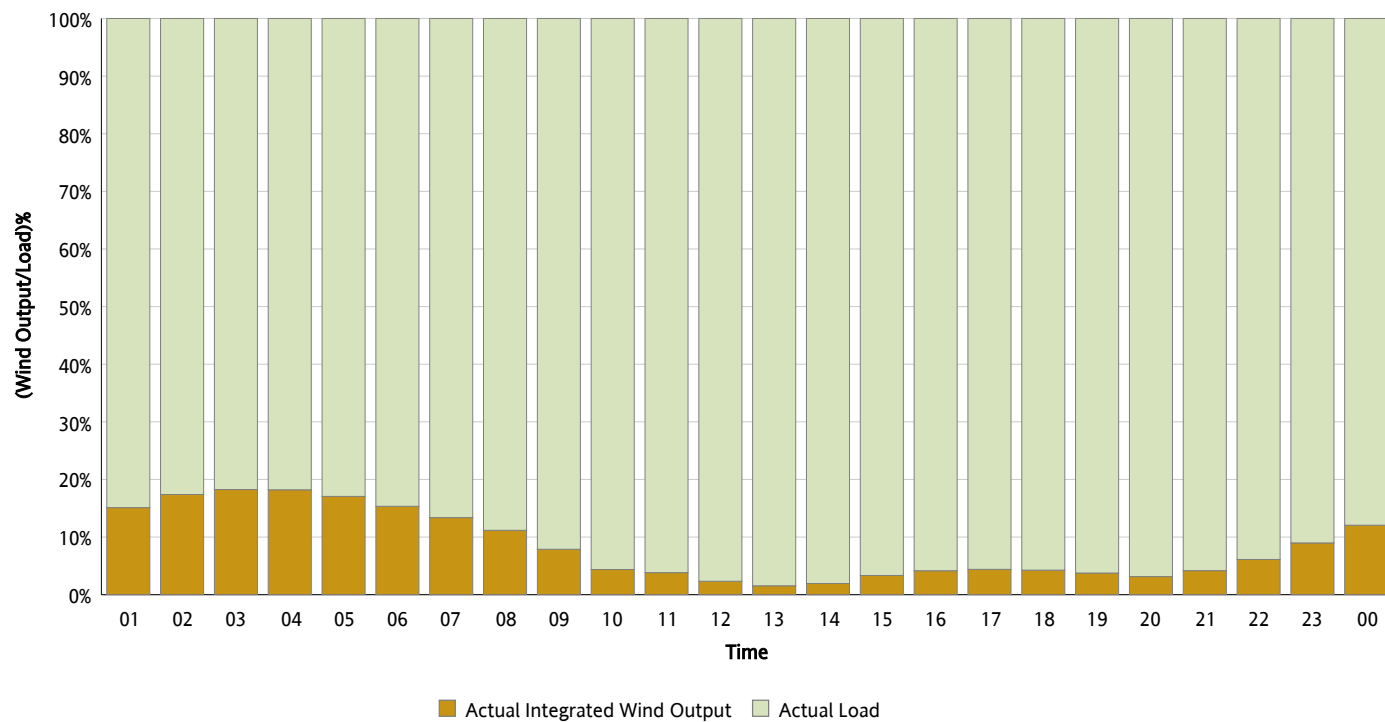
Actual Wind Output as a Percentage of the Total Installed Wind Capacity

09/23/2012



Actual Wind Output as a Percentage of the ERCOT Load

09/23/2012



ERCOT Load vs. Actual Wind Output

09/16/2012 - 09/23/2012

